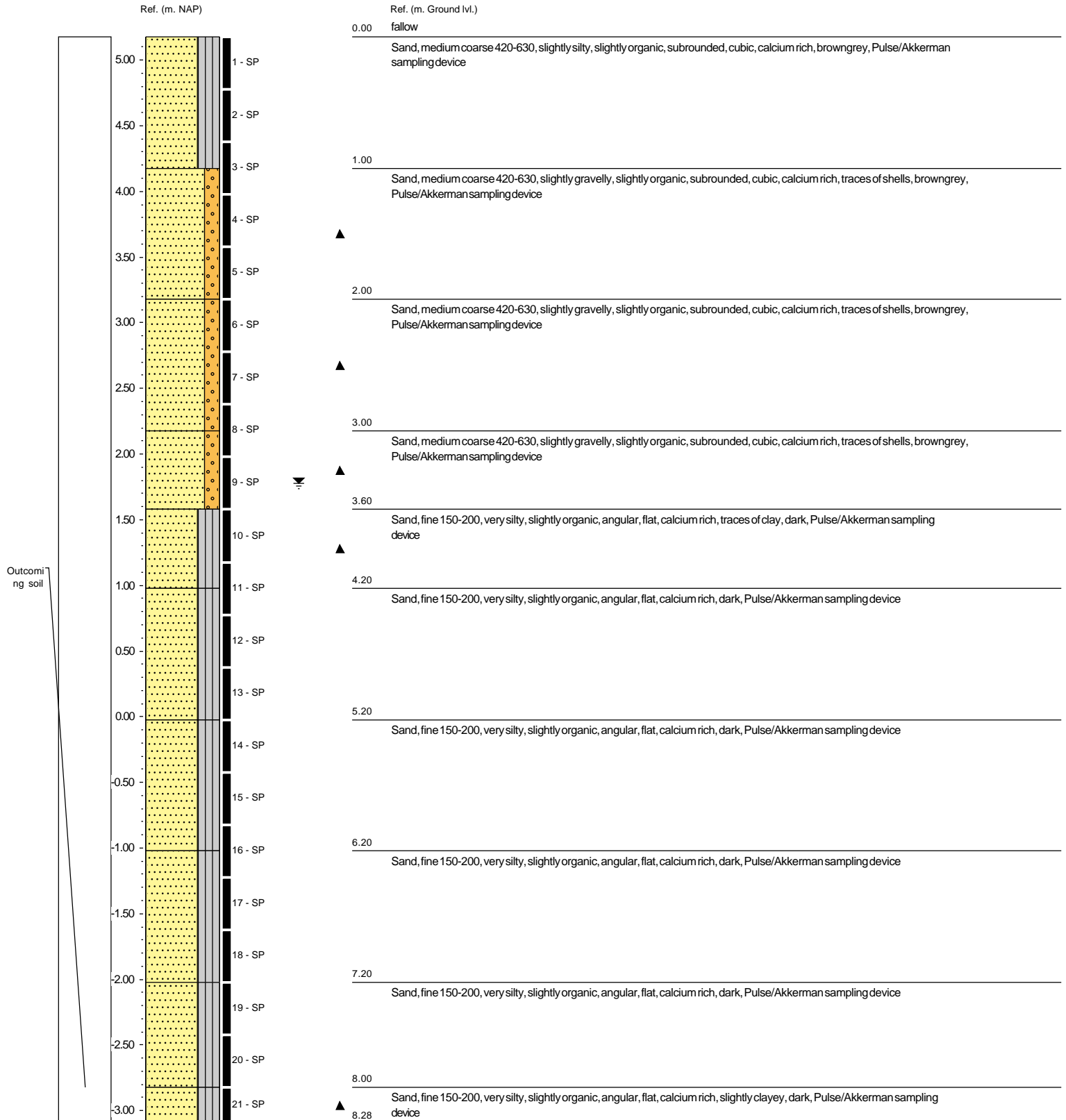


Borehole: B03

Date: 24-8-2022 Drilling master : D. Oostingh
 X-coordinate: 58601.85 Total Depth (cm. ground lvl.) 2200
 Y-coordinate: 438258.65
 Ref. plane (NAP): 5.177
 Groundwater (cm. ground lvl.): 340



Projectcode: MVJ22120

Projectname: SWC2022 Maasvlakte



Gemeente Rotterdam

Identification according to NEN-EN-ISO 14688-1

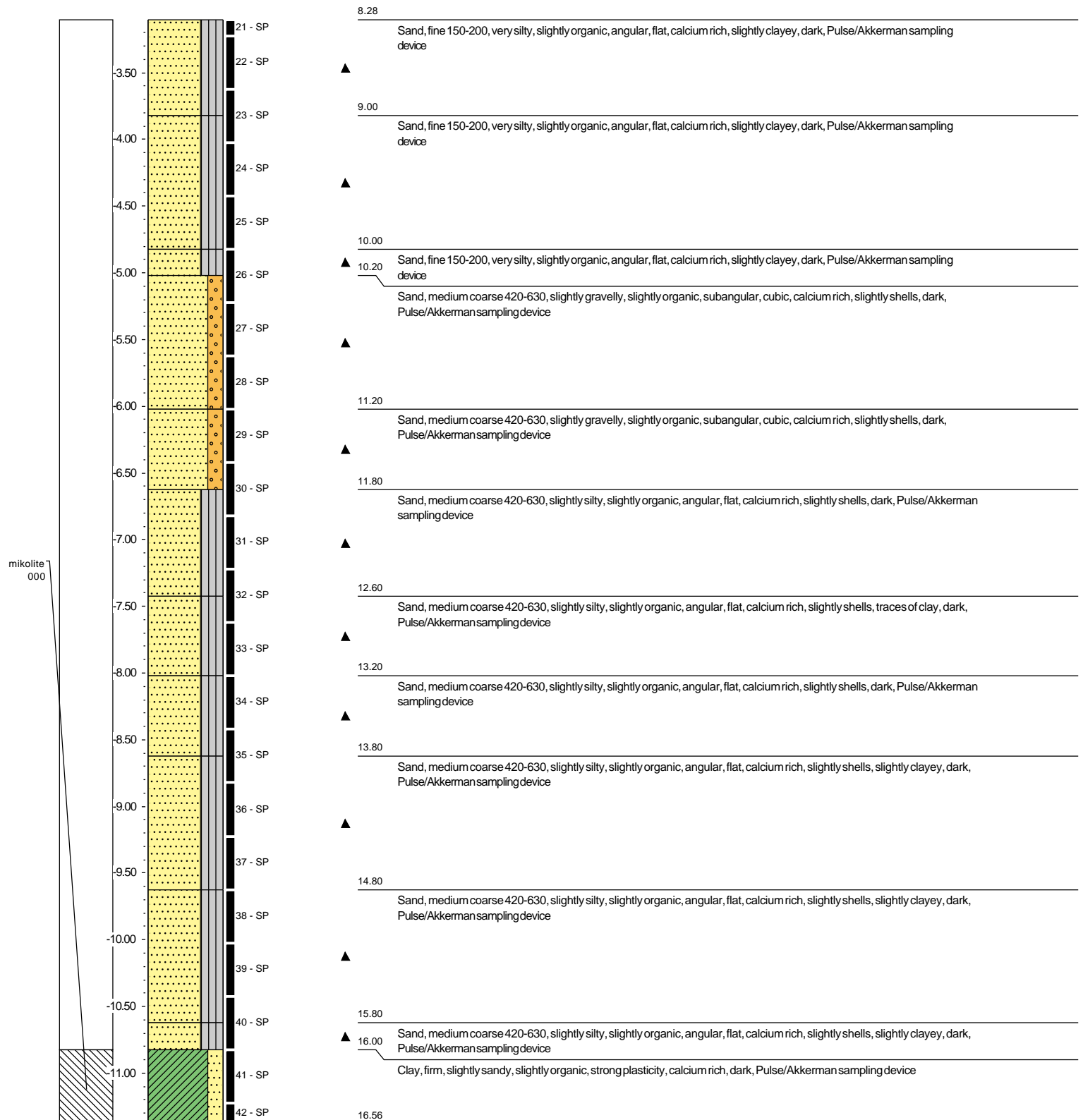
Borehole: B03

Date: 24-8-2022
X-coordinate: 58601.85
Y-coordinate: 438258.65
Ref. plane (NAP): 5.177
Groundwater (cm. ground lvl.): 340

Drilling master : D. Oostingh
Total Depth (cm. ground lvl.): 2200

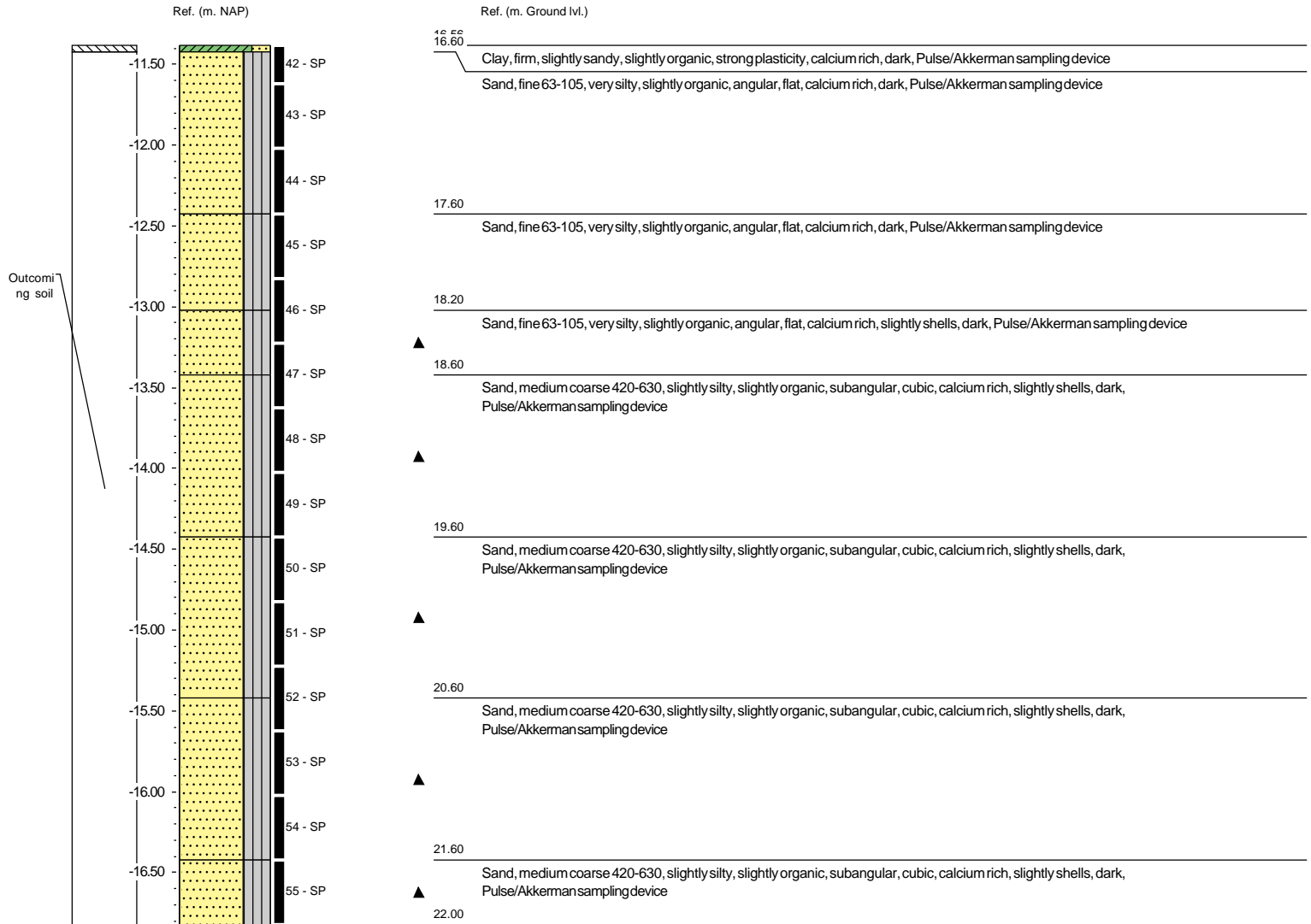
Ref. (m. NAP)

Ref. (m. Ground lvl.)



Borehole: B03

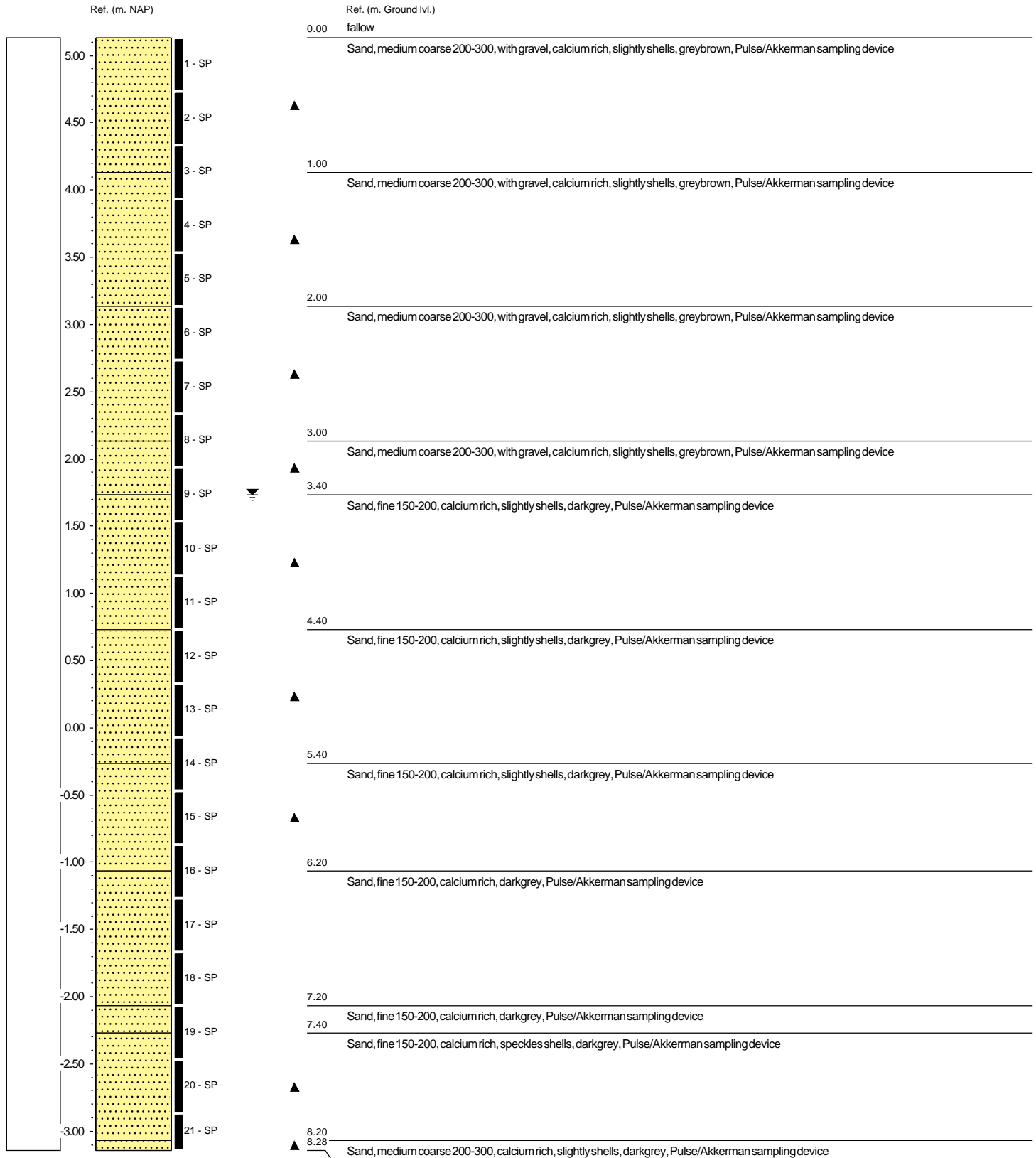
Date: 24-8-2022 Drilling master : D. Oostingh
 X-coordinate: 58601.85 Total Depth (cm. ground lvl.): 2200
 Y-coordinate: 438258.65
 Ref. plane (NAP): 5.177
 Groundwater (cm. ground lvl.): 340



Borehole: SPT03

Date: 24-8-2022
 X-coordinate: 58643.39
 Y-coordinate: 438163.58
 Ref. plane (NAP): 5.134
 Groundwater (cm. ground lvl.): 340

Drilling master : D. Oostingh
 Total Depth (cm. ground lvl.): 3520



Projectcode: MVJ22120

Projectname: SWC2022 Maasvlakte



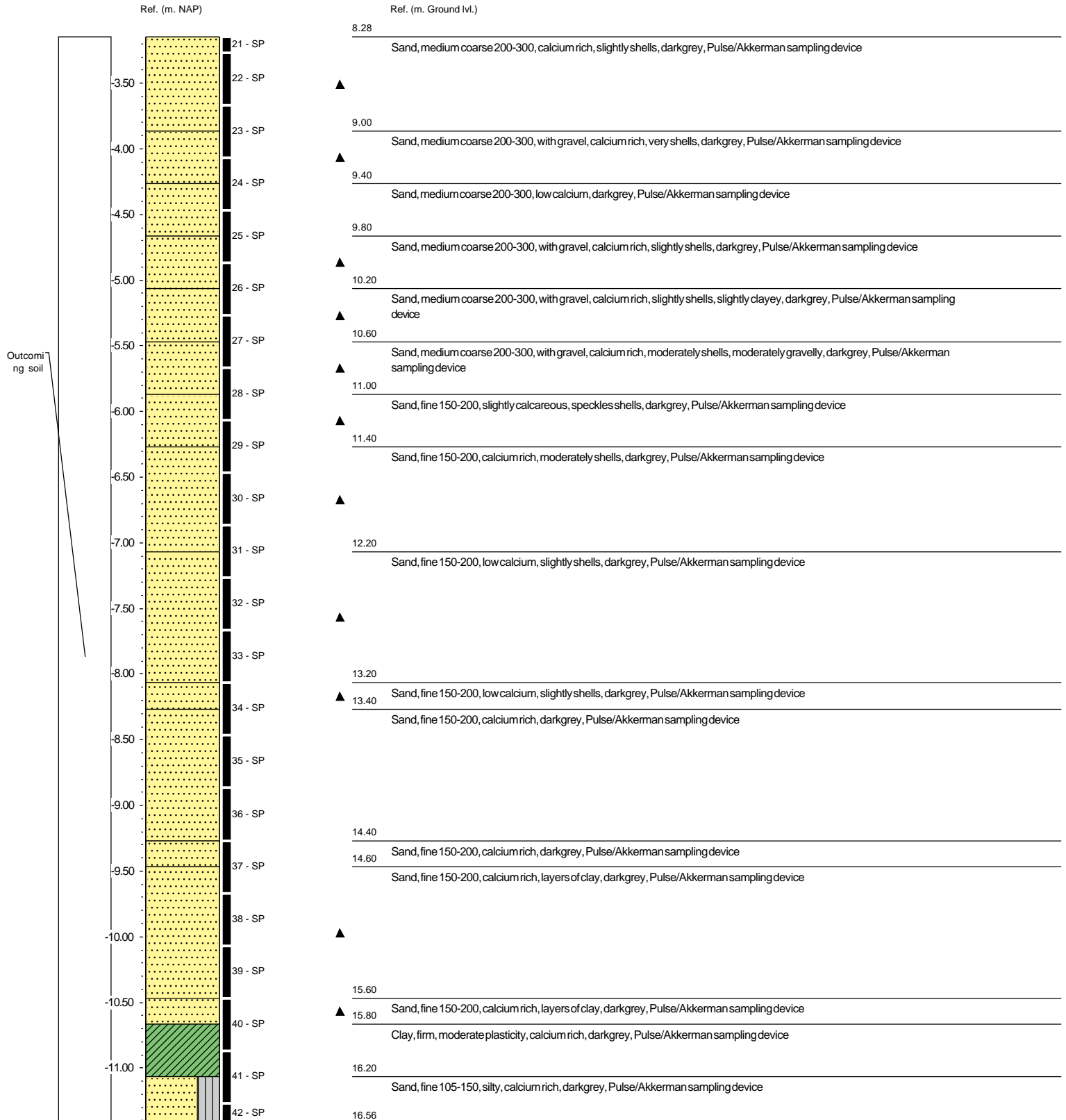
Gemeente Rotterdam

Identification according to NEN-EN-ISO 14688-1

Borehole: SPT03

Date: 24-8-2022
X-coordinate: 58643.39
Y-coordinate: 438163.58
Ref. plane (NAP): 5.134
Groundwater (cm. ground lvl.): 340

Drilling master : D. Oostingh
Total Depth (cm. ground lvl.): 3520



Projectcode: MVJ22120

Projectname: SWC2022 Maasvlakte



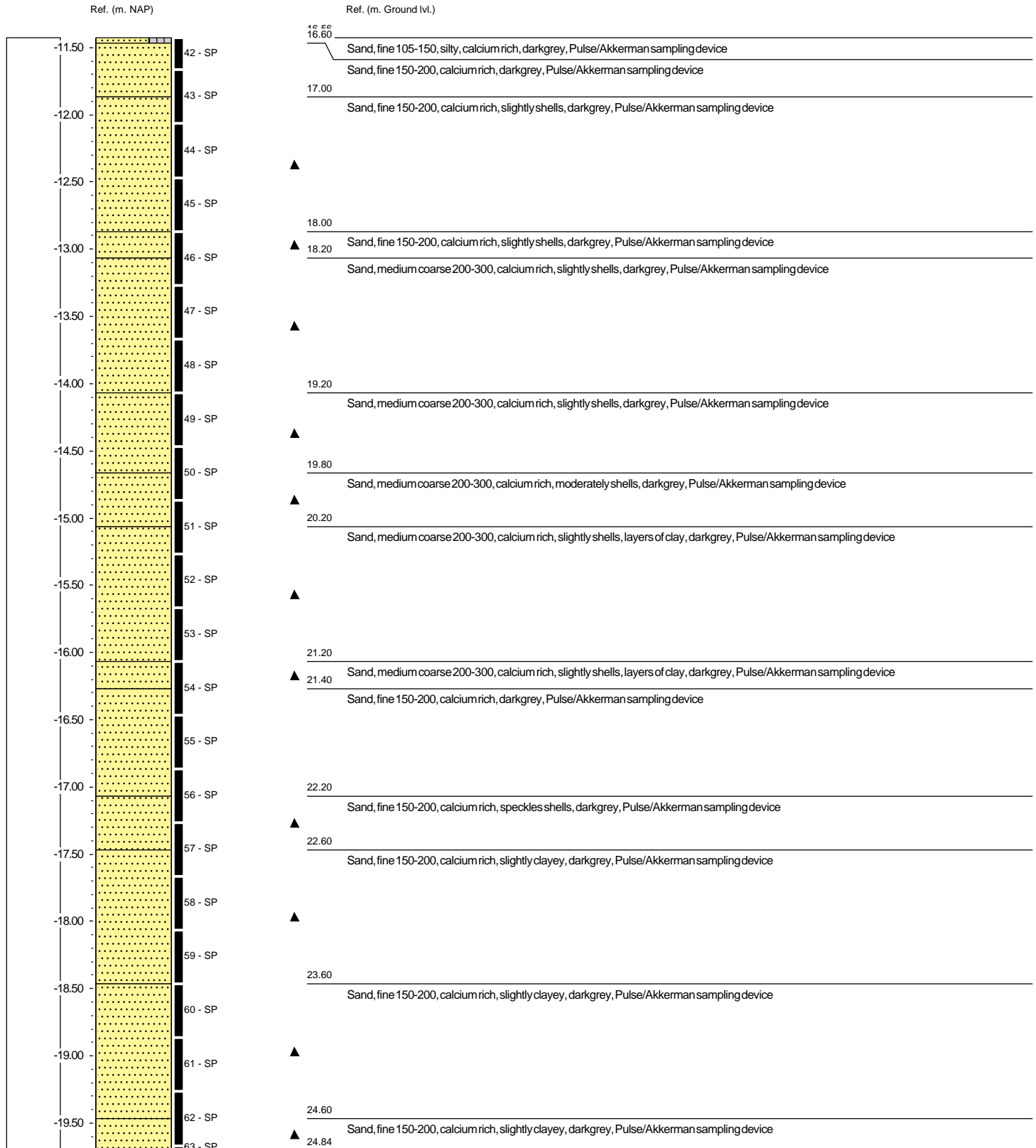
Gemeente Rotterdam

Identification according to NEN-EN-ISO 14688-1

Borehole: SPT03

Date: 24-8-2022
X-coordinate: 58643.39
Y-coordinate: 438163.58
Ref. plane (NAP): 5.134
Groundwater (cm. ground lvl.): 340

Drilling master : D. Oostingh
Total Depth (cm. ground lvl.): 3520



Projectcode: MVJ22120

Projectname: SWC2022 Maasvlakte



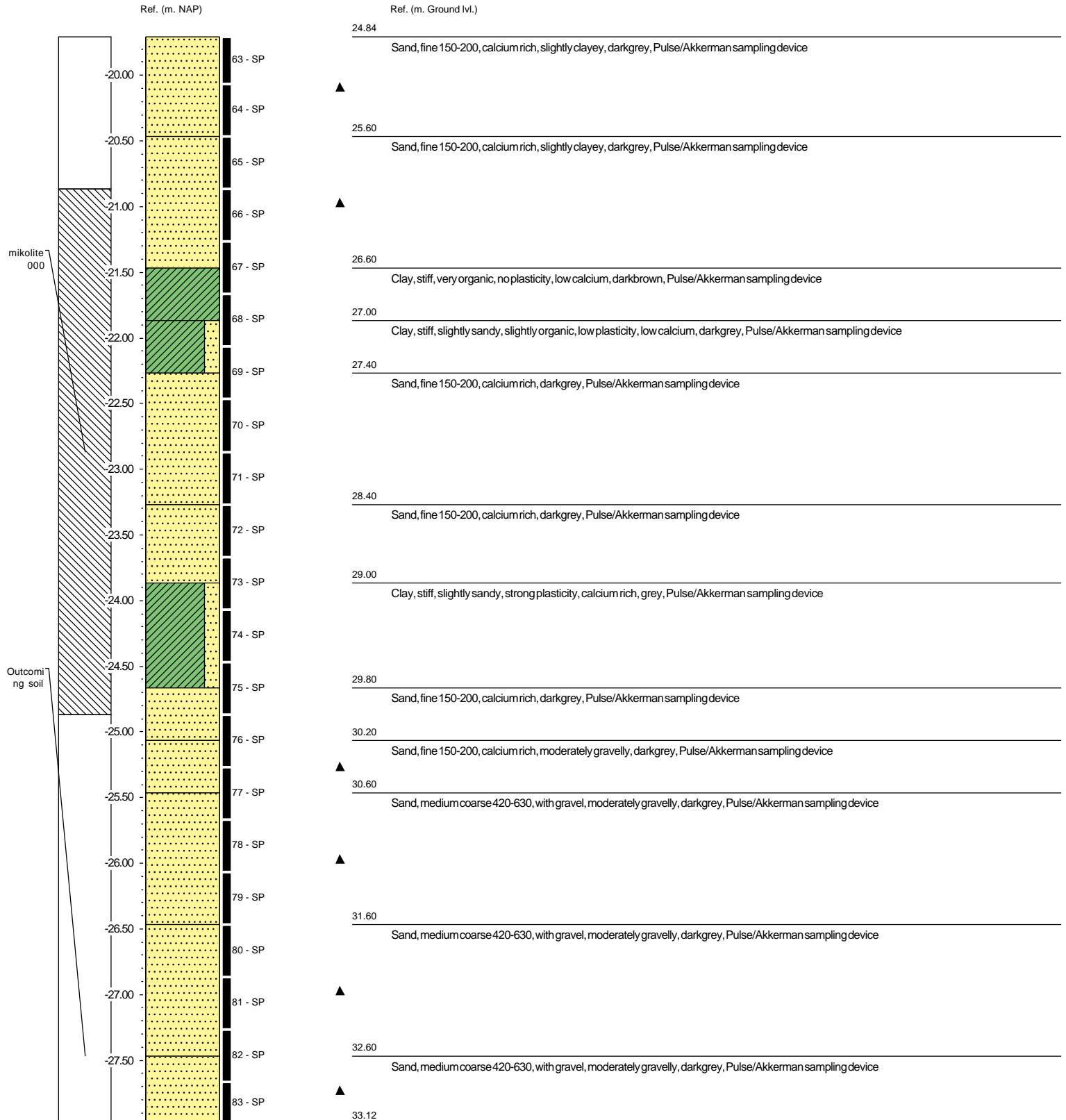
Gemeente Rotterdam

Identification according to NEN-EN-ISO 14688-1

Borehole: SPT03

Date: 24-8-2022
X-coordinate: 58643.39
Y-coordinate: 438163.58
Ref. plane (NAP): 5.134
Groundwater (cm. ground lvl.):340

Drilling master : D. Oostingh
Total Depth (cm. ground lvl.)3520



Projectcode:	MVJ22120
Projectname:	SWC2022 Maasvlakte

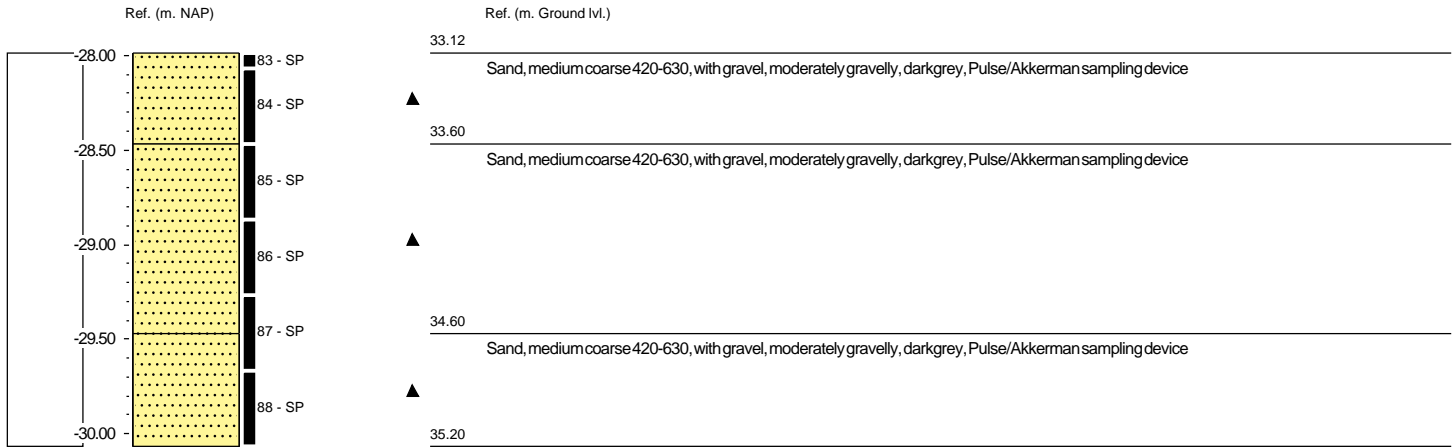


Gemeente Rotterdam

Identification according to NEN-EN-ISO 14688-1




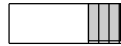
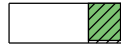
Borehole: SPT03

Date: 24-8-2022 Drilling master : D. Oostingh
 X-coordinate: 58643.39 Total Depth (cm. ground lvl.): 3520
 Y-coordinate: 438163.58
 Ref. plane (NAP): 5.134
 Groundwater (cm. ground lvl.): 340

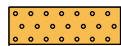
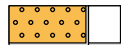
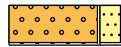
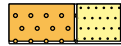
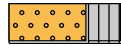
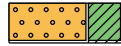


Legenda (conform NEN-EN-ISO 14688-1)

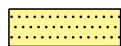



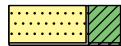
KEIEN (KEITJES)

-  KEIEN
-  KEIEN, met grind
-  KEIEN, met zand
-  KEIEN, met silt
-  KEIEN, met klei







GRIND

-  GRIND
-  GRIND met keien (keitjes)
-  GRIND, zwak zandig
-  GRIND, sterk zandig
-  GRIND, siltig
-  GRIND, kleilig

ZAND

-  ZAND
-  ZAND, met keien (keitjes)
-  ZAND, zwak grindig
-  ZAND, sterk grindig
-  ZAND, kleilig






SILT

-  SILT
-  SILT, met keien (keitjes)
-  SILT, zwak grindig
-  SILT, sterk grindig
-  SILT, zwak zandig
-  SILT, sterk zandig






KLEI

-  KLEI
-  KLEI, met keien (keitjes)
-  KLEI, zwak grindig
-  KLEI, sterk grindig
-  KLEI, zwak zandig
-  KLEI, sterk zandig






VEEN (HUMUS, DETRITUS)

-  VEEN
-  VEEN, zwak zandig
-  VEEN, sterk zandig
-  VEEN, siltig
-  VEEN, kleilig






odour

-  None odour
-  weak odour
-  moderate odour
-  strong odour
-  extreme odour




oil

-  no oil-water reaction
-  poor oil-water reaction
-  moderate oil-water reaction
-  strong oil-water reaction
-  extreme oil-water reaction





p.i.d. value

-  >0
-  >1
-  >10
-  >100
-  >1000
-  >10000

samples

-  disturbed sample
-  undisturbed sample
-  voluming

miscellaneous

-  special compound
-  Average highest groundwater level
-  groundwater level
-  Average lowest groundwater level