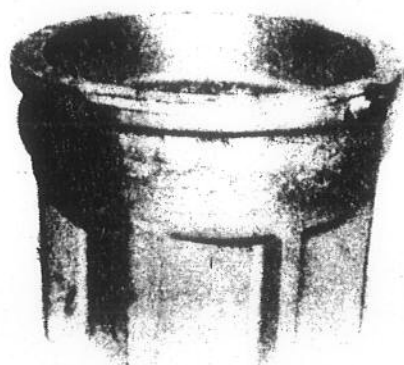


# HANDELSMAATSCHAPPIJ A. VAN HATTEM B.V.

Noordvest 135, 3111 PG Schiedam  
Telefoon: 010-267871 - Telex: 24378.



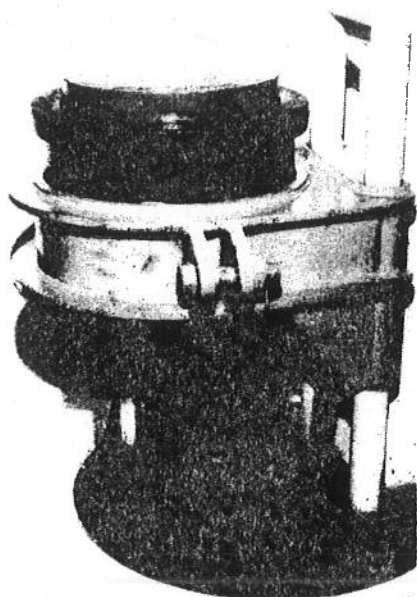
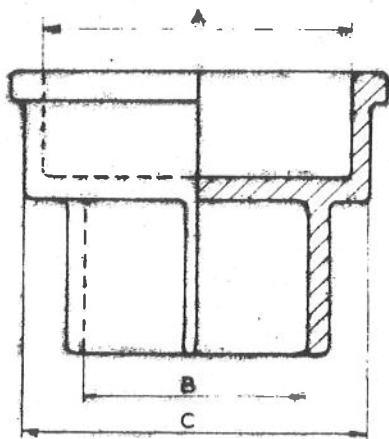
## REVOLVING PILECAPS for concrete piles among other piles

Advantages: Less adjustingwork, less wear to leader, pilecap and pilecap-bearing, less pilecracks.

These pilecaps can be fitted to each type of piling-frame and under each type of pilehammer by means of guide-brackets.

### Dimensions Round Pilecaps

A	B	C	Weight in Kg ±
410 x 150	170 x 170	470	280
410 x 150	210 x 210	470	280
410 x 150	240 x 240	470	280
410 x 150	270 x 270	470	280
410 x 150	300 x 300	470	280
600 x 150	300 x 300	664	530
600 x 150	320 x 320	664 + 2,5	530
600 x 150	350 x 350	664	530
600 x 150	370 x 370	664	530
600 x 150	400 x 400	664	530
600 x 150	420 x 420	664	530
600 x 150	430 x 430	664	530
600 x 150	440 x 440	664	530
650 x 150	440 x 440	764	800
650 x 150	470 x 470	764 + 2,5	800
650 x 150	480 x 480	764 + 2,5	765
720 x 150	520 x 520	820	980



We have already supplied more than 1100 pilecaps of this type.

Different designs and dimensions can be supplied on request.

The same implies for guide-brackets for these caps in all designs.

Steelplates - Azobe cushions - Mahade cushions - Resitex cushions can also be supplied on request.

Delivery: From stock Schiedam.

At the same time we rebuild Diesel pilehammers of all manufacture and we have a very large range of spareparts for DELMAG/HERA/KOBE/and MITSUBISHI Dieselhammers in stock. We have constantly for sale or for hire revised Diesel pilehammers, in stock for example DELMAG D5/D12/D15/D22/D30/D46/D62/K45.

Alterations under reserve.

Gewicht stalen slagplaat  $0,705 \times d^2 \times d_{dikte} \times 7,8$   
Gewicht van beugel  $664 \text{ mm}$  200 kg.  
Gewicht van beugel  $764 \text{ mm}$  in v. 200 kg.